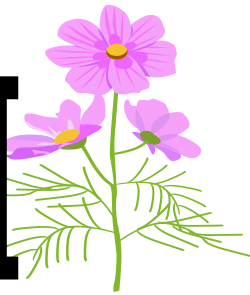


INZAI



November 2022 NEWSLETTER

Published by the City of Inzai
2364-2 Ohmori Inzai City 270-1396
TEL 0476-42-5111

Secretarial Public Information Division,
Hissho-Koho-ka (TEL: 42-5117)

Planning and Policy Division,
Kikaku-Seisaku-ka (TEL: 33-4068)

This newsletter is published for residents who are not familiar with Japanese language to introduce news and events designed for residents of Inzai City. Although most programs are basically conducted in Japanese, you are always welcome. Please join our events and enjoy your life in Inzai! If you would like to be posted this paper every month, contact to kikakuka@city.inzai.chiba.jp by email.

イルミライ★INZAI

Illumirai★Inzai

Largest along the Railway Line! Approximately 600,000
LED Illumination.

沿線最大級!約60万球のLED
イルミネーションイベント Illumination Event “Illumirai★Inzai”
イルミライ★INZAI
2022.11.12 (sat.) ~ 2023.2.19 (sun.)
17:00 ~ 22:00

今年も、シティプロモーションの一環として、
イルミネーションイベント「イルミライ★INZAI」を開催します。
ぜひ、沿線最大級の電飾で彩られた「印西の夜」をお楽しみください。
The illumination event “Illumirai★Inzai” will be held as part of city promotion this year again.
Enjoy the illumination largest along the railway line “The Night in Inzai”.

会場：千葉ニュータウン中央駅周辺

Event & Lighting ceremony
点灯開始日にイベントおよび点灯式を開催します。詳細は6ページ。
2022.11.12 (sat.) | (イベント) 13:15 ~
(点灯式) 16:45 ~
※悪天候の場合、翌日に順延
関経済振興課プロモーション推進室 ☎33-4477

Symbol Tree Chiba New Town Chuo Station

Event & Lighting Ceremony

On that day, some events and the lighting ceremony will be held. For more details, refer to the following table.

November 12 (Sat.) For Events 1:15 p.m. – , For Lighting Ceremony 4:45 p.m. –

**In the case of bad weather, it will be postponed to the following day.*

Venue: Around the Chiba New Town Chuo Station.

Compared as FY2021, about 100,000 LED illumination will be increased and then the illumination will be brighter.

Illumination with image of Inzai City's features will be set up at each area.

Inquiry: City Promotion Office, Economic Promotion Division, *Promotion-Suishin-shitsu, Keizai-Shinko-ka*

(TEL: 33-4477)

Time	Contents
1:15 p.m. – 1:20 p.m.	Opening Declaration by Inba Meisei High School Student Council
1:20 p.m. – 1:35 p.m.	Handbell Performance "Fairy Bell"
1:45 p.m. – 2:00 p.m.	Performance by Oguradai Elementary School Chorus Club
2:05 p.m. – 2:25 p.m.	Hip-Hop Dance Performance "ACE"
2:35 p.m. – 2:50 p.m.	Performance by Kikari Junior High School Brass Band Club
3:00 p.m. – 3:30 p.m.	Performance by Inba Meisei High School Music Club / Brass Band Club
3:40 p.m. – 4:00 p.m.	Gospel Performance "Be Blessed"
4:05 p.m. – 4:30 p.m.	Performance by Narita High School Dance Drill Club "VIGORS"
4:45 p.m. – 5:15 p.m.	Lighting Ceremony Started /Greeting by Mayor of Inzai City / Performance by Inba-Ryuo-Daiko
5:20 p.m. – 6:30 p.m.	Piano Performance

価格高騰緊急支援給付金

Emergency Support Benefits for Soaring Electricity/Gas/Food Prices for Households Not Subject to Taxation of Resident Tax – 50,000 Yen for Household –

50,000 yen for household will be provided to any households not subject to taxation of resident tax, etc. due to large impact on the household budget by inflation of energy, food, and so on.



Any households not subject to taxation of resident tax

(1) For any households whose family members have already registered as a resident in Inzai City on/before January 1, 2022: A confirming letter regarding contents of the benefits / confirming matters will be sent to eligible households. Therefore, after confirming the contents, use the enclosed return envelope to send a reply by January 31 (Tue.), 2023.

(2) For any households including a person moving in Inzai City on/after January 2, 2022: It is required to submit an application form separately due to non-sending of a confirming letter.

**For more details, refer to the website of Inzai City or contact the Inzai City Call Center below.*

Inquiry: Inzai City Call Center for Emergency Support Benefits (TEL: 050-5443-6343, 8:45 a.m. – 5:00 p.m. on weekdays), 【regarding the system】 Cabinet Office Call Center (toll-free number: 0120-526-145, 9:00 a.m. – 8:00 p.m. on weekdays)

Elimination Campaign for Violence against Women on November 12 (Sat.) – 25 (Fri.)

Violence against women / Sex crimes / Stalking / Prostitution / Human trafficking / Sexual harassment remarkably infringe human rights for women. Therefore, It is an important problem to overcome for creating gender-equal society. Inzai City offers the “Women’s Worries Consultation” by professional women’s counselors on the 1st/3rd Thursday every month in addition to the DV consultation counter. Furthermore, Chiba Prefecture offers the following consultation counters. Feel free to contact to any counters without worrying by yourself.

DV Consultation Counter: #8008 (*ha-re-re-ba*)

DV (Domestic Violence)

It means violence by your partner such as a spouse/lover. DV includes various sorts of violence such as mental /economic / sexual violence as well as physical violence, which will leave a great scar in your heart.



Purple ribbon is a symbol to eliminate violence for women.

Strengthening Week of Hotline of Human Rights for Women on November 18 (Fri.) – 24 (Thu.)

Contact the following hotline without worrying by yourself about bullying at your workplace, sexual/power harassment, domestic violence from your husband/partner, stalking, any damage caused by various intimate services rendered by any female high school student, AV appearance coercion. Any staff of the Legal Affairs Bureau or civil rights commissioner will give you some advice.

Inquiry: Women’s Rights Hotline (TEL: 0570-070-810, 8:30 a.m. – 5:15 p.m. on weekdays)

Strictly confidential / Free of charge

**During the strengthening week, it will be available by 7:00 p.m. on weekdays. Available at 10:00 a.m. – 5:00 p.m. on Saturdays/Sundays.*

Consultation Counter by Chiba Prefecture

For Women Only

- Women Support Center (24 hours a day) TEL: 043-206-8002
- Inba Health Welfare Center (regarding only DV) TEL: 043-483-0711
- Comprehensive Consultation for Women TEL: 04-7140-8605

For Men Only

- Comprehensive Consultation for Men TEL: 043-308-3421

**For more details about the method/date/time of consultation, refer to the website of each organization.*

Inquiry: Support Unit, Child-Rearing Support Division, *Shien-gakari, Kosodate-Shien-ka* (TEL: 33-4640)



COVID-19 Vaccination

**For more details, refer to the website of Inzai City.*

For Vaccination for Omicron Variant

You are permitted to get a vaccine (omicron variant: BA-4,5) manufactured by Pfizer at any medical institution in Inzai City.

Eligibility: Any persons aged 12 years or older who have already got the 1st/2nd vaccines in case 3 months have passed since the latest vaccination. **Excluding any persons who have already got a vaccine (omicron variant).*

Vaccination Venue: For more details about available medical institutions, refer to the website of Inzai City or contact the Inzai City Call Center.

Coupon Sending

The coupon has sequentially been sent from Inzai City according to the latest vaccination date.

**In the case of moving in Inzai City after the vaccination, application is separately required.*

Vaccination for Infants

Eligibility: Any infants aged 6 months – 4 years.

Vaccine: Vaccine for infants manufactured by Pfizer.

Time of Vaccination: 3 times.

Interval of Vaccination: Interval of 1st/2nd time: 3 weeks (20 days or longer in principle, 18 days at the earliest).

Interval of 2nd/3rd time: 8 weeks (55 days or longer).

Coupon: The sending date will be informed on the website of Inzai City.

**For more details about available medical institutions, refer to the enclosed leaflet.*

Inquiry: Inzai City COVID-19 Call Center (TEL: 50-2657, 9:00 a.m. – 5:00 p.m. on weekdays)



Child Care

印西市ファミリーサポートセンター

Looking for Members / Childcare Support by Everyone!

Inzai City Family Support Center

“Family Support Center” aims to help each other by registering as a member both user members who need childcare support and providing members who want to help in childcare. In case you cannot pick up your child at a nursery school or in case you have something to go somewhere, etc., feel free to contact the Family Support Center.

Type of Members

User Members: Any persons living/working in Inzai City who have any child/children aged 6 months - 6th grade of elementary school.

Providing Members (volunteers having to be paid): Any persons aged 20 years or older living in Inzai City who stay healthy in body and mind and can be active in the support.

Both Members: Anyone can also be used and provided.

Use/Register: Registration is required for any user members and providing members. Both registrations of user members and providing members are also acceptable. For more details about application, contact the Family Support Center.

Contents of Support

- Keep your child until the opening hours of the nursery school / kindergarten or after the nursery school / kindergarten, and pick up / drop off your child.
- Keep your child after the school / after-school childcare.
- Keep your child during ceremonial occasions / school events / shopping, etc.

**Available Time: 6:00 a.m. – 10:00 p.m. (in principle).*

Rewards for Providing Members

In the case of receipt of the support, any user members will pay the following rewards for any providing members.

Monday – Friday: 700 yen for hour.

Any other days including December 28 – January 4: 900 yen for hour.

Subsidy for Any Single-Parent Families, etc.

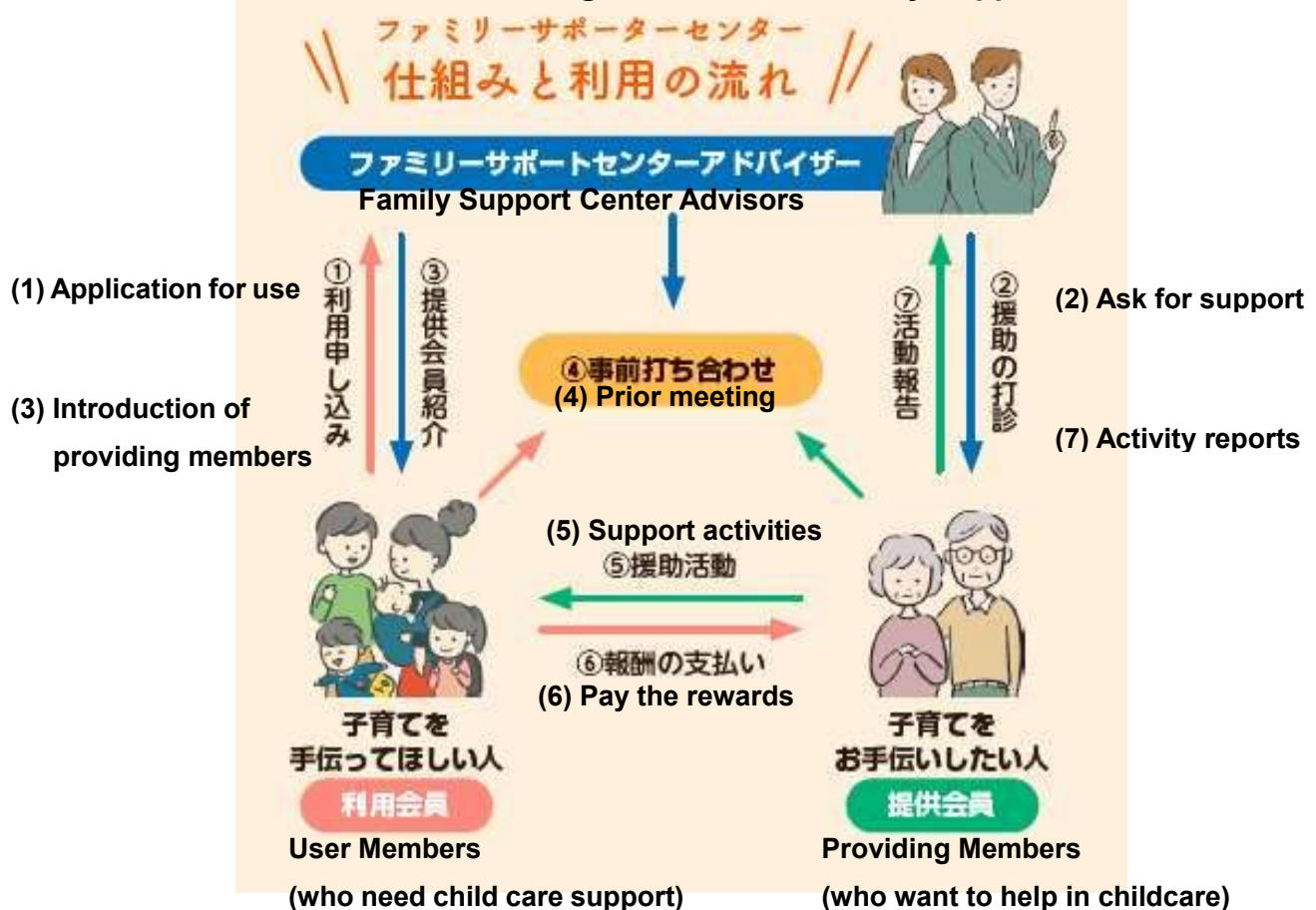
Each father/mother in single-parent families may be subsidized for a part of the rewards.

Subsidy for Making Free of Charge regarding Preschool Education / Childcare

In case any persons who have already received the “recognition of necessities in childcare”, excluding in case of going to any nursery school / private kindergarten / Certified Kodomo-en, receive the family support service of “keeping a child,” it may be subsidized for a part of the rewards.

*For more details about both subsidies, contact the Child-Rearing Support Division (Kosodate-Shien-ka) before using the family support service.

Outline / Flowchart of Using the Service in Family Support Center



Inquiry: 【For Registration / How to Use】 Inzai City Family Support Center (at the 2nd Building (*Nigo-kan*) in Chuo Ekimae Local Community Hall, *Chuo-Ekimae-Chiiki-Koryu-kan* (TEL: 48-5728, excluding on Sunday/Monday),

【For Subsidies for Rewards by Single-Parent Families, etc. / Making Free of Charge regarding Preschool Education / Childcare】 Support Unit, Child-Rearing Support Division, *Shien-gakari, Kosodate-Shien-ka* (TEL: 33-4640)

11月は児童虐待防止推進月間

November is the Month for Child Abuse Prevention Promotion

“Might it be abusing...?” / Do not hesitate to call “189 (*Ich-Haya-ku*)”!

What is “Child Abuse”?

“Child Abuse” means human rights violation for children by guardians, which can be classified into 4 categories. (1) “Physical abuse” such as beating/kicking. (2) “Sexual abuse” such as obscene acts. (3) “Neglect” such as locking in the house / leave a child for a long time. (4) “Psychological abuse” such as intimidation by words and action / family quarrel and violence in front of children. Any acts are prohibited by law as impermissible acts. In addition, the “young carer” is

a problem difficult to surface because of a sensitive issue in a family, which means a young person who does the housework or takes care of family members' person on a daily base.

The "child abuse" / "young carer" affects children's healthy growth and development seriously, which leads to a social problem. Therefore, if you feel "perhaps..." around you, feel free to contact the following Counters.

Can you keep children's smiles?

Do you have any worries about your children at home? Refrain from going out due to COVID-19 will cause a curious type of life anxiety and stress. While the amount of time you spend with your family increases, if you find any worries about your family, parent-child relationship and child-rearing, feel free to contact the following Counters.

Consultation Counters

Child Consultation Center National Common 3-Digit Dial (TEL: 189 (*Ichi-Haya-ku*))

Dial 110 for Children/Families at Chiba Prefectural Central Child Consultation Center,
Chiba-ken-Chuo-Jido-Sodan-jo (TEL: 043-252-1152)

Inzai City Troubled Child Consultation, *Katei-Jido-Sodan*, Inzai City Office (TEL: 42-5180)

Inquiry: Child Consultation Unit, Child-Rearing Support Division, *Jido-Sodan-gakari*,
Kosodate-Shien-ka (TEL: 33-4961)



Orange Ribbon Movement
for Child Abuse Prevention

Childcare Time

Many events and lessons are held at each Nurturing Support Center /Nursery School /
Certified Kodomo-en / Children's Center. For more details, refer to the notice of each facility
(2D code).



National Health Insurance & National Pension



傷病手当金の適用期間延長

Extension of Available Period for Injury and Sickness Allowance in National Health Insurance System / Latter-Stage Elderly Medical Care Insurance System

In case any persons enrolling in National Health Insurance System / Latter-Stage Elderly Medical Care Insurance System who receive the salary and take off from work due to COVID-19 infection or being likely to get infected, the injury and sickness allowance may be offered. We will inform you that the available period will be extended.

Available Period: By December 31 (Sat.).

**Reservation is required. The application will be available for 2 years after the following date of the date when you take off from work. For more details, refer to the website of Inzai City.*

Inquiry: Payment Unit, National Health Insurance and National Pension Division, *Kyuhu-gakari*, *Kokuho-Nenkin-ka* (TEL: 33-4464), Elderly Person Medical Care Pension Unit, National Health Insurance and National Pension Division, *Koreisha-Iryo-Nenkin-gakari*, *Kokuho-Nenkin-ka* (TEL: 33-4470)

外国人のための無料相談

Consultation for Foreigners (Free of Charge)	November 11(Fri.), 9:00 a.m. – 4:00 p.m. Reservation is required in advance by phone.
--	--

Inquiry: Policy Promotion Unit, Planning and Policy Division, *Seisaku-Suishin-gakari*, *Kikaku-Seisaku-ka* (TEL: 33-4068)